

BS Series

BS1S·BS1D(Small-sized Bar Screen)

Toughness and long life

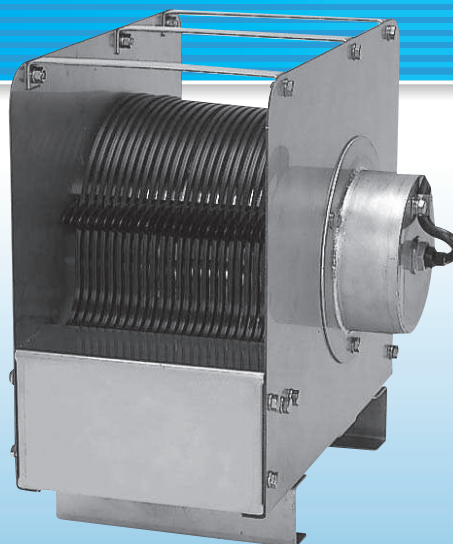
Adoption of a reduction gear built-in motor of outer rotor type and bearings not come into contact with sewage water realize long service life.

Easy maintenance

The reduction gear built-in motor and rake built in one piece facilitates maintenance.

Adoption of a reduction gear with submergence Tolerance

In the event that a reduction gear built-in motor is submerged due to unexpected increase of water, screen can be used continuously provided that such submergence is detected early and appropriate measures are taken.



Applications

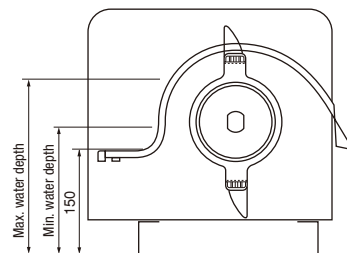
* Septic tanks or small sized water treatment facilities

Examples of Modification

* Changing Cable lengths
* Changing Voltage

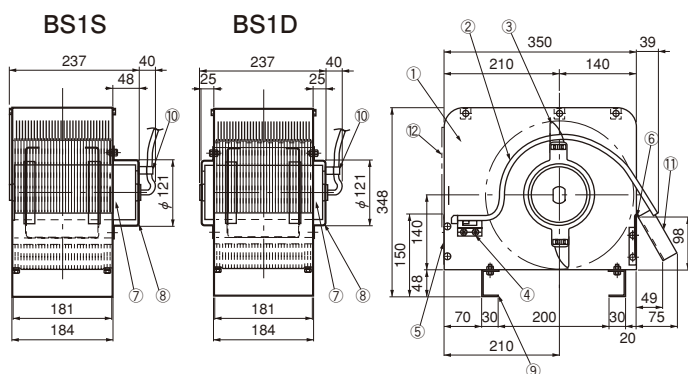
Standard specification

Capacity (Clear water) (m³/h)	Silt (mm)	Model
		BS1S·BS1D
	2	23
	2.5	27
Rotation Speed (min⁻¹)		13/16 (50/60Hz)
Motor		25 W (water-proof type), 3-ph
Weight (kg)		14
Applicable Min. Water Depth (mm)		165
Applicable Max. Water Depth (mm)		230
Standard Accessories		Cable (2 PNCT 0.75mm², 4 cores, outer diameter : ϕ 10.5mm) × 3m



Dimensions

Unit: mm



⑪ Chute is optional.

Number	Name	Quantity	Material
1	Frame	2	SUS304
2	Screen Bar	—	PET
3	Rake	2	PC
4	Bar Receipt	1	PP
5	Inflow Cover	1	SUS304
6	Outflow Cover	1	SUS304
7	Geared Motor	1	SUS304
8	Motor Cover	1	SUS304
9	Legs	2	SUS304
10	Cable Band	1	PE
11	Chute	1	PE
12	Inflow Packing	1 set	NBR

* Note **VCT**: Polyvinyl-chloride sheathed cabtyre cable **2PNCT**: Chloroprene sheathed cabtyre cable **SUS**: Stainless steel
PET: Polyethylene terephthalate **PC**: Polycarbonate **PP**: Polypropylene **PE**: Polyethylene **NBR**: Nitril Rubber