

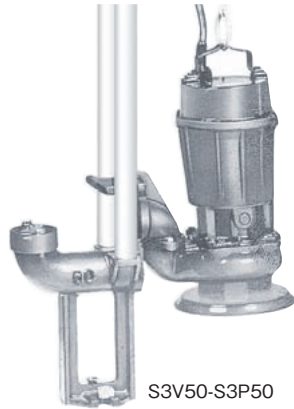
# S3V

Vortex Impeller models for handling liquids containing sludge or fibrous solids



Vortex Impeller

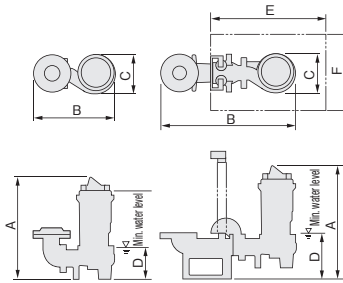
0.25~7.5kW



S3V50-S3P50

## Dimensions (mm)

- Free standing
- Guide rail installation



## Standard Specifications

Discharge mm	Pump model	Installation kit No.		Rated output kW	Phase	Flow - Total head m <sup>3</sup> /min-m		No. of poles	Pump weight kg	
		Guide rail installation	Free standing			50Hz	60Hz		S3V	S3V-D S3V-W
40	S3V40T	S3P40	S3F40	0.25	3	0.1 - 4.4	0.09 - 4.3	2	19	20
	S3V50T	S3P50	S3F50			0.4	0.14 - 4.7		0.14 - 4.3	20
50(65)	S3V50T	S3P50	S3F50	0.75	3	0.17 - 7.4	0.17 - 7.3	2	23	24
	S3V65	S3P65	S3F65			1.5	0.42 - 8.0		0.38 - 8.0	2
80 (65)(100)	S3V80	S3P80B	S3F80	2.2	3	0.8 - 6.6	0.7 - 6.8	4	63	-
	S3V80	S3P80B	S3F80			3.7	1.0 - 8.8		0.9 - 9.5	4
100 (80)	S3V100	S3P100B	S3F100	5.5	3	1.2 - 10.4	1.2 - 10.8	4	103	-
	S3V100	S3P100B	S3F100			7.5	[1] 1.3 - 12.8 [2] 1.3 - 12.8 [3] 0.8 - 17.5 [4] 0.8 - 18.4			4

\* A pump with a discharge size within parentheses ( ) is also available.  
[ ] Impeller No.

	Pump model	Installation kit No.	Rated output kW	A	B	C	D	E	F
				Free standing	S3V40T	S3F40	0.25	370	245
Free standing	S3V50 (T)	S3F50	0.4~0.75	403	245	165	115	-	-
	S3V65	S3F65	1.5	490	418	220	125	-	-
	S3V80	S3F80	2.2	550	524	292	190	-	-
Guide rail installation	S3V100	S3F100	3.7	612	543	331	190	-	-
	S3V40T	S3P40	0.25	441	443	165	170	550	350
	S3V50 (T)	S3P50	0.4~0.75	461	443	165	175	550	350
Guide rail installation	S3V65	S3P65	1.5	566	663	220	200	550	350
	S3V80	S3P80	2.2	620	830	292	260	600	500
	S3V100	S3P100	3.7	682	849	331	260	700	600
Guide rail installation	S3V100	S3P100	5.5	710	920	355	260	700	600
	S3V100	S3P100	7.5	745	935	387	260	700	600

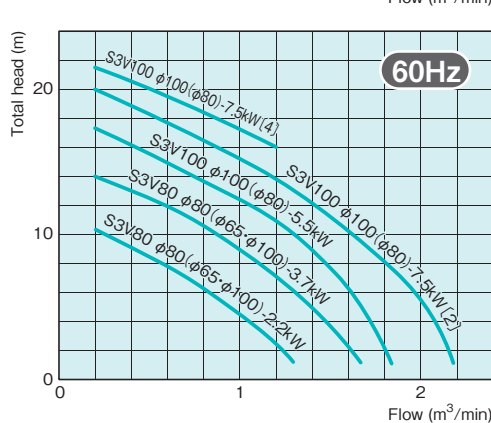
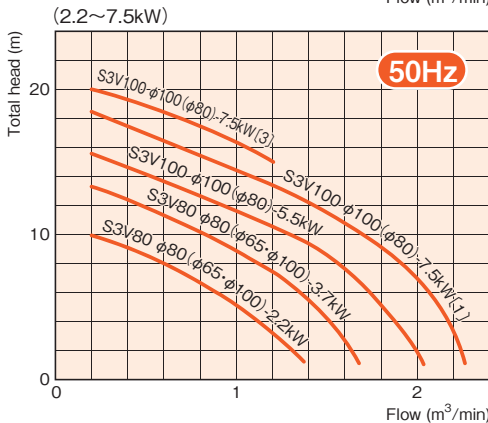
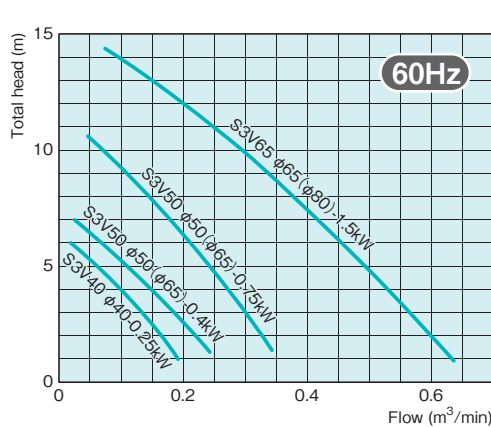
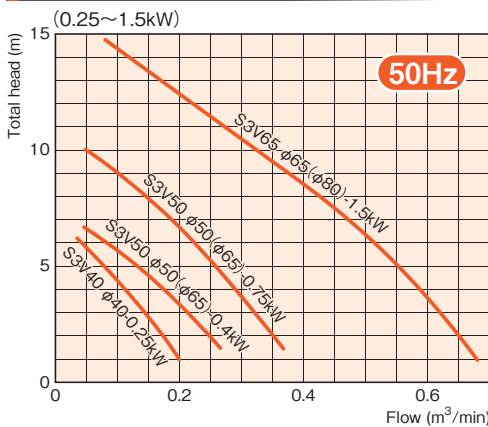
## Cable Specifications

- 0.25~0.75kW : VCT 1.25mm<sup>2</sup>×4 cores×Outer dia. 11.5 mm×6m
- 1.5kW : VCT 1.25mm<sup>2</sup>×4 cores×Outer dia. 11.5 mm×10m
- 2.2kW : VCT 1.25mm<sup>2</sup>×4 cores×Outer dia. 11.5 mm×8m

- 3.7kW : VCT 2.0mm<sup>2</sup>×4 cores×Outer dia. 12 mm×8m
- 5.5kW : VCT 3.5mm<sup>2</sup>×4 cores×Outer dia. 14 mm×8m
- 7.5kW : VCT 5.5mm<sup>2</sup>×4 cores×Outer dia. 16.5 mm×8m

VCT: PVC insulated PVC sheathed cable

## Performance Curves



[ ] Impeller No.

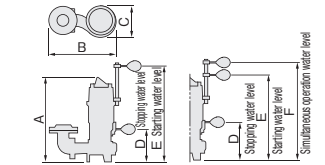
## Auto-operation models

S3V-D: Auto-operation

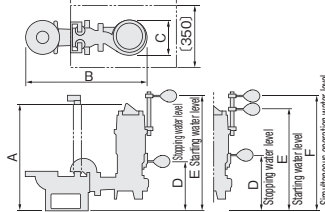
S3V-DW: Auto-alternate operation

Auto-operation	Pump model	
	Pair name	Pump No. 1 and 2
S3V40DT	S3V40DWT	S3V40WT + S3V40DT
S3V50DT	S3V50DWT	S3V50WT + S3V50DT
S3V50D	S3V50DW	S3V50W + S3V50D
S3V65D	S3V65DW	S3V65W + S3V65D

## Free standing



## Guide rail installation (S50)



	Pump model	Installation kit No.	Rated output kW	A	B	C	D	E	F
				Free standing	S3V40DT	S3F40	0.25	404	245
Free standing	S3V50 (T)	S3F50	0.4~0.75	437	245	165	125	575	
	S3V65D	S3F65	1.5	548	473	220	275	745	
	S3V40WT	S3F40	0.25	404	245	165	155	490	
Free standing	S3V50W (T)	S3F50	0.4~0.75	437	245	165	165	525	
	S3V65W	S3F65	1.5	548	473	220	335	695	
	S3V40DT	S3P40	0.25	475	443	165	185	610	
Guide rail installation	S3V50D (T)	S3P50	0.4~0.75	495	443	165	185	635	
	S3V65D	S3P65	1.5	624	663	220	350	820	
	S3V40WT	S3P40	0.25	475	443	165	225	560	
Guide rail installation	S3V50W (T)	S3P50	0.4~0.75	495	443	165	225	585	
	S3V65W	S3P65	1.5	624	663	220	410	770	
	S3V65W	S3P65	1.5	624	663	220	410	770	